



# MONTHLY MEMBERSHIP PROGRESS REPORT

District 11 D1

Results as of: 5/31/2017

GMT: THOMAS MATNEY

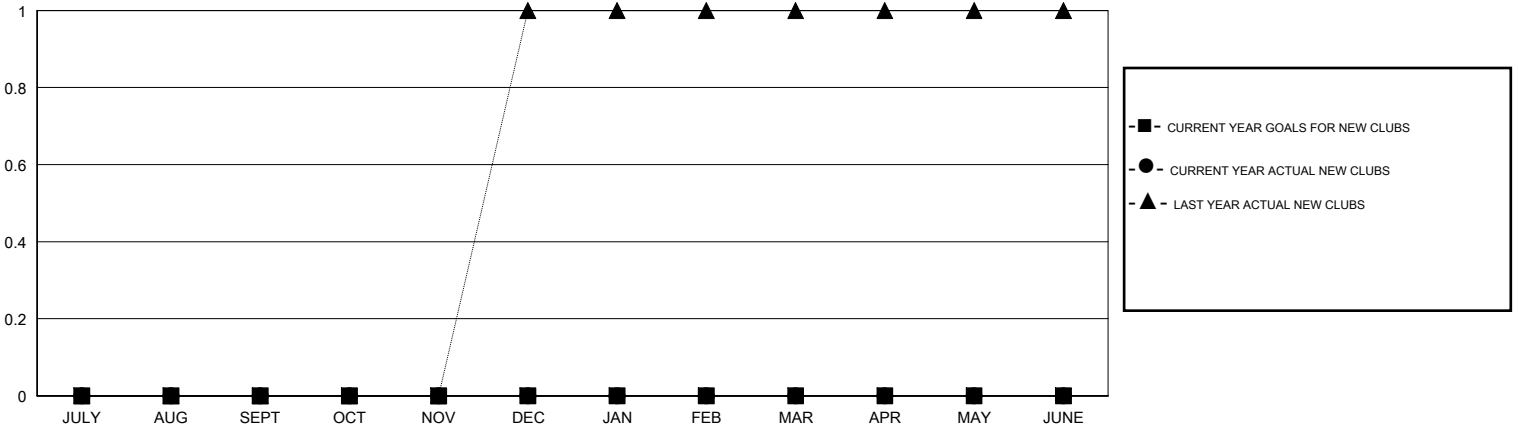
LOCATION MICHIGAN

GMT CA

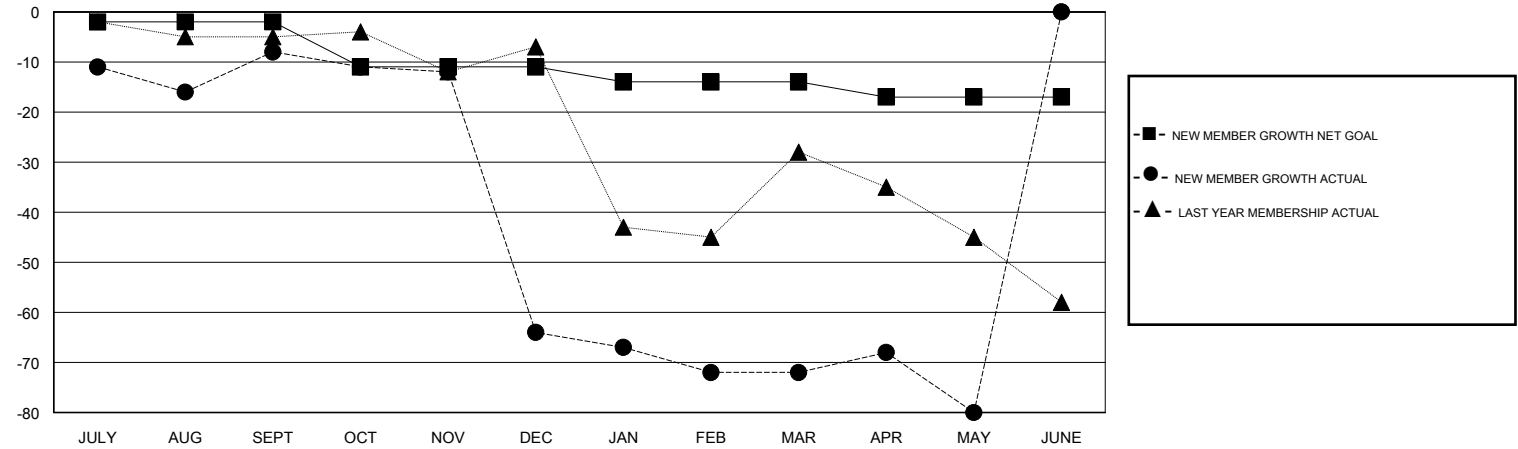
Clubs			
RESULTS FOR 2016-2017			
QUARTER	NEW CLUB GOAL	NEW CLUBS	DROPPED CLUBS
JULY/AUG/SEPT	0	0	0
OCT/NOV/DEC	0	0	0
JAN/FEB/MAR	0	0	1
APR/MAY/JUNE	0	0	0

Members			
RESULTS FOR 2016-2017			
QUARTER	NEW MEMBER GROWTH NET GOAL (not reinstated or transfers)	NEW MEMBER GROWTH ACTUAL (not reinstated or transfers)	DROPPED MEMBERS ACTUAL (including transfers)
JULY/AUG/SEPT	-2	16	24
OCT/NOV/DEC	-9	20	76
JAN/FEB/MAR	-3	16	24
APR/MAY/JUNE	-3	13	21

GOALS AND ACTUAL NEW CLUBS CUMULATIVE



GOALS AND ACTUAL MEMBERS CUMULATIVE



DROPPED CLUBS: 1	27 CLUBS OF 39 ADDED 1 OR MORE NEW MEMBERS	<b>GENDER DISTRIBUTION</b>
		MALE 859 (73.17%)
		FEMALE 315 (26.83%)
<b>DROPPED MEMBERS</b>	<a href="#">CLICK HERE FOR CUMULATIVE MEMBERSHIP DATA</a>	TOTAL FAMILY UNIT MEMBERS 277
DECEASED 20		FAMILY MEMBERS PAYING HALF DUES 141
CLUB CANCELLED 0		
OTHER 125		
<b>TOTAL 145</b>		